

## Sculpture and Decoration : Bangkok Metropolitan

Mr. Kittikoon Viseshasumana

Urban Planner

Department of Land Readjustment and Renewal Planning

Land Readjustment and Renewal Section

Besides traffic jams, another significant problem of Bangkok lies in lack of decoration and landscape improvement. This is because Bangkok, located on Ratanakosin Island, was a city of more than 200 years of history. The city is an important area for settlement. Many new communities have settled while the town lacks of systematic planning to support such growth. For instance, the city lacks of the vast available area as an impressive sight for travelers and the activity area for the major communities and districts. The problems make the city monotonous. The attractive sights are also neglected for improvement.

In addition to identify development plan for specific area, installing "sculpture" in an outstanding area while improving the surrounding landscape will also improve the image of the city. Previously, there were many organizations working in collaboration with Thai Sculptors Association to install sculptures in front of many buildings including the Queen Sirikit National Convention Center and head office of Kasikorn bank Public Company Limited Paholyothin road.

### Definition of "Sculpture"

Sculpture (Royal Institute Dictionary 1982) : an. The practice of fine art relating to chiseling wood, marble or metal into patterns or forms

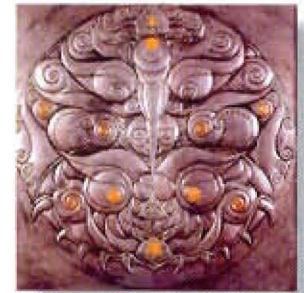
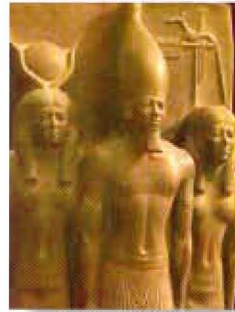
Sculpture (Thai Junior Encyclopedia) : an work of art expressed through a creation of materials into 3 dimensional shape with volume, weight and space required

### Categories of Sculpture

1. **Bas Relief** is a projecting image from the ground or the background. It can be perceived only from the front side. The image will be projected less than half in the round against the background as on most coins, image decorating on wares or architectural building, church, temple, amulets



2. **High Relief** is similar to the bas relief. However, the most prominent elements of the composition are undercut and rendered at more than half in the round against the background so the image is more realistic than the bas relief.



3. **Round Relief** is the sculpture that can be perceived from every angle or more than 4 sides such as wares, statues, Buddha image, significant personal figures, animals, etc.



"รามณะนา" ชิต เหมชัยประชา

"ความรัก" นนทิวรรณ จันทนะพะลิน

### History of Sculpture in Thailand

The sculpture in Thailand began when Buddhism was disseminated in Thailand and Buddha image was created for Buddhism to pay homage to the Lord Buddha.

As for western sculpture, the practice began by Professor Silpa Bhirasri (Professor Corrado Ferocci), an Italian sculptor who was the pioneer in western-designed sculpture in 1923. During the reign of King Rama VI, he was commissioned by the government to be the sculptor in Thailand. His prominent works include monuments across Thailand and designs of sculptures for major buildings and places. He is also the founder of Silpakorn University and the first Dean of Faculty of Painting Sculpture and Graphic Arts.

### **Sculpture and Bangkok Decoration**

Enhancing Bangkok's environment by installing sculptures can be implemented by many approaches according to the significance of each area both in terms of city, district and community such as the King Chulalongkorn (King Rama V) Monument, Democracy Monument on Rachadamneon road and King Taksin the Great Monument at Wong Wein Yar.

In present, installing sculptures in major areas of the district such as the public parks including Lumpini park, Wachira Benjatas park, Jatujak park and Benchasiri park will improve the landscape while impressing the visitors because of the beautiful scenery.



**Commemorative Coin of Queen Sirikit installed at Benchasiri Park, KlongToey**



**"Rammana" installed at Benchasiri Park, Klong Toey**



**"Asean Sculpture" installed at Jatujak Park, Jatujak**



**"Asean Sculpture" installed at Jatujak Park, Jatujak**

Installing sculptures in important areas in the district such as the sculpture in front of the big building in the central area will make the district become outstanding and attractive. In addition to encouraging positive attitude towards the organization's image, the sculpture can enhance the landscape of the district in overall.





**“Lokuttara” in front of the Queen Sirikit National Convention Center**



**Sculpture in front of the head office of Kasikorn bank, Phahonyotin road**

Installing sculpture at central areas will bring city the landmarks and meeting points for visitors such as the Victory Monument. The sculptures installed at major intersection, junction or along the main roads such as Sathorn road, Sukhumvit road, Rama IV road and Pahonyothin will provide the public with resting areas for taking a break from a stressful journey.

Installing sculptures in an important area of the community such as the small public park or the vast area within the community will make the district become more attractive with local touch. In addition, they are also potential for further development as tourist site.

In addition to enhance Bangkok’s environments in terms of city, area and community by installing sculptures, Bangkok Metropolitan Administration can request collaboration from organizations including Department of Rural Roads, Expressway Authority of Thailand and other organizations to analyze and find appropriate the most appropriate areas for improvement and sculpture installation including gate ways, intersections, junctions, wasted areas as well as potential areas lacking improvement. The installation will enhance the landscape of the areas and Bangkok as a whole. Furthermore, the sculptures might be created due to special occasions such as celebration, important event, and auspicious day as well as national and international events. They will be installed at the particular areas as appropriate.

In addition, the sculpture might be installed in an area that is available and accessible by the children such as the “sculptural park.” The park will be re-designed for installing 30-40 sculptures. This “sculptural park” will become another tourist attraction of Bangkok while fostering gentle mind, imagination and creativity of young generations. It will also encourage artistic learning which might become inspiration and good foundation for many fields of professions related to art such as fine art, sculpture, applied art, architecture, decorative art and visual communication art which are part of bringing up good and smart generations of the future society.

The sculptural installation project is considered another approach for enhancing Bangkok’s environment. However, the project will be successful if government sector, private organizations and public are determined to collaborate in order to improve the image of Bangkok. In addition to improving Bangkok’s quality of life, this will turn the city to be a better place to live sustainably.