

Appendix

Appendix: Art Works

1. European Surrealist Works

BACON, Francis	<i>Studies for Figures at the Base of Crucifixion</i> (1944)
CHAGALL, Marc	<i>Tribute to Apollinaire</i> (1911-12) <i>The Flute Player</i> (1954) <i>Paradise</i> (1956-58)
CHIRICO, Giorgio de	<i>The Philosopher's Conquest</i> (1914) <i>The Disquieting Muses</i> (1916) <i>Melancholy and Mystery of a Street</i> (1914)
DALI, Salvador	<i>Architectonic Angelus of Millet</i> (1933) <i>Soft Construction with Boiled Beans: Premonition of Civil War</i> (1936) <i>Couple with Their Heads Full of Clouds</i> (1936) <i>Daddy Longlegs of the Evening – Hope!</i> (1940) <i>The Christ of Saint John of the Cross</i> (1951) <i>The Great Masturbator</i> (1929) <i>Sublime Moment</i> (1938) <i>Sleep</i> (1937) <i>The Specter of Sex Appeal</i> (1934) <i>Mae West</i> (1934-35) <i>The Persistence of Memory</i> (1931) <i>Portrait of Frau Isabel Styler-Tas</i> (1945) <i>Shirley Temple, The Youngest Sacred Monster of the Cinema</i> (1939) <i>The Weaning of Furniture-Nutrition</i> (1934) <i>Three Young Surrealist Women Holding in Their Arms the Skins of an Orchestra</i> (1936) <i>Atavistic Vestiges After Rain</i> (1934)
DELVAUX, Paul	<i>The Entry into the City</i> (1940) <i>The Call of the Night</i> (1937) <i>Echo</i> (1943)
ERNST, Max	<i>Two Children Are Threatened by a Nightingale</i> (1924) <i>The Whole City</i> (1935-36) <i>The Angel of Hearth and Home</i> (1944) <i>Luncheon on the Grass</i> (1935) <i>The Eye of Silence</i> (1943-44) <i>Napoleon in the Desert</i> (1941) <i>Oedipus Rex</i> (1922)
FUCHS, Ernst	<i>Anti-Lacoon</i> (1965)
KANDINSKY, Wassily	<i>Black Points</i> (1937)

KOONING, Willem de	<i>Woman, I</i> (1950-52)
MAGRITTE, René	<i>Time Transfixed</i> (1938) <i>The Delusion of Grandeur</i> (1961) <i>The Heart of the Matter</i> (1928) <i>Philosophy in the Boudoir</i> (1947) <i>The Art of Living</i> (1967) <i>The Castle of the Pyrenees</i> (1959) <i>The Red Model</i> (1935) <i>The Pleasure Principle</i> (1937) <i>Sign of Evening</i> (1936) <i>Threatening Weather</i> (1928) <i>The Therapist</i> (1937) <i>The Rape</i> (1934) <i>Not to Be Reproduced</i> (1937) <i>The Tomb of the Wrestlers</i> (1960)
MASSON, André	<i>Pythia</i> (1943) <i>Paysage Iroquois</i> (1944) <i>Portrait of André Breton</i> (1941)
MIRÓ, Joan	<i>Carnival of Harlequin</i> (1924-25) <i>The Hunter</i> (1923-24) <i>Head of a Woman</i> (1938) <i>The Worked Land</i> (1923-24) <i>Woman, Bird by Moonlight</i> (1944)
PENROSE, Roland	<i>Portrait of Valentine</i> (1937)
PICASSO, Pablo	<i>Woman in Tears</i> (1937) <i>Guernica</i> (1937)

2. Thai Traditional Art

Mural painting at Wat Dusitdaram, Thonburi
(The Buddha confronting Mara)



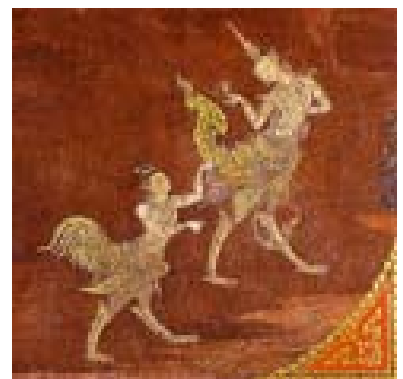
Mural paintings from the galleries at the Temple of the Emerald Buddha, Bangkok
(scenes from the *Ramakien*, the Thai version of the *Ramayana*)



Mural paintings from the galleries at the Temple of the Emerald Buddha, Bangkok
(scenes from the *Ramakien*, the Thai version of the *Ramayana*)



Mural paintings from Wat Sutastepwararam, Bangkok
(legendary animals from the Himapan Forest)



Scripture cabinet, black and gold lacquer
Wat Seung Wai, Ayuthaya period, 18th century

